

**INSTITUTE FOR  
SCIENCE AND  
TECHNOLOGY**



**INSI**

"Empowering organizations with accurate and reliable  
(geospatial) solutions"



# walking you through INSI

- **ABOUT INSI**

---

- **VISION**

---

- **OUR TEAM**

---

- **SERVICE PORTFOLIO**

---

- **CONTACT**

---



**INSTITUTE FOR  
SCIENCE AND  
TECHNOLOGY**



# About INSI

Initially founded as an entity which provides professional services in the preparation of spatial planning documents, and an economic and environmental thinktank, INSI nowadays specializes in the field of geographic information systems, data and metadata management, software, and product development

The company excels in using the latest technologies to help our clients digitally transform their services by applying data management, and software development to deliver impactful solutions

**13**

Years of working  
experience.

**45+**

Hard-working experts in the  
fields of Urban Planning, Spatial  
Engineering, Economics, Energy  
Efficiency, WebGIS

**10+**

currently employing 7  
IT specialists that work  
in cross-sectoral digital  
project

**15+**

a ready to use pool of  
candidates of IT specialists  
who passed the pre-  
selection process

# The Values we stand for



## Vision

Our mission is to provide comprehensive and innovative tech solutions to businesses and organizations around the world. Through our expertise in web GIS and a variety of other technical services, we aim to empower our clients to make data-driven decisions and drive progress in their respective industries.

# Milestones



# Board

Is composed of individuals with 10+ years of experience in entrepreneurship, business development, tech lead and operational management



**Managing Director  
INSI Group**



**Head of Environmental  
Department**



**Head of Economic  
Department**



**Head of Spatial  
Planning Department**



**Head of Administration  
Department**



**Head of Transport &  
Mobility**



**Head of Research &  
Analysis**



**Head of Energy  
Efficiency Unit**



**Business Sales  
Development**

# Senior Staff members

With previous resources' experience at CodeFrog, Chemonics, USAID, RIT, Deloitte, Trudo, and Engineering ITS, the company provides hands-on expertise to their clients

**ENVIRONMENTAL  
PLANNING AND  
STRATEGIC IMPACT  
ASSESSMENT**

**MUNICIPAL  
DEVELOPMENT  
PLANS, ZONING  
MAPS &  
REGULATORY  
PLANS**

**SUSTAINABLE  
TRANSPORT  
AND URBAN  
MOBILITY PLANS**

**IN-DEPTH  
ANALYSIS &  
FEASIBILITY  
STUDIES**

**ENERGY  
EFFICIENCY  
ANALYSIS AND  
ENGINEERING  
PLANS**

**ENVIRONMENTAL  
PLANNING AND  
STRATEGIC IMPACT  
ASSESSMENT**

INSI's Strategic Environmental Assessment services support effective and efficient decision-making, ensuring that sustainable development and other environmental considerations are considered in policy, program, or planning.

The Environment and Climate Change Sector within the framework of INSI offers various types of environmental consulting services

- Strategic Environmental & Climate Assessments
- Support services for environmental policies (drafting of Environmental Plans, Waste Management Plans)
- Consultancy services for Water Resource Management, Climate Change and Natural Resources



## **MUNICIPAL DEVELOPMENT PLANS**

Multi-sectoral strategic spatial planning documents, which set the long-term vision, objectives, and goals for future economic, environmental, public, and social infrastructure spatial developments for urban and rural areas within the municipal territory.

## **DETAILED REGULATORY PLANS**

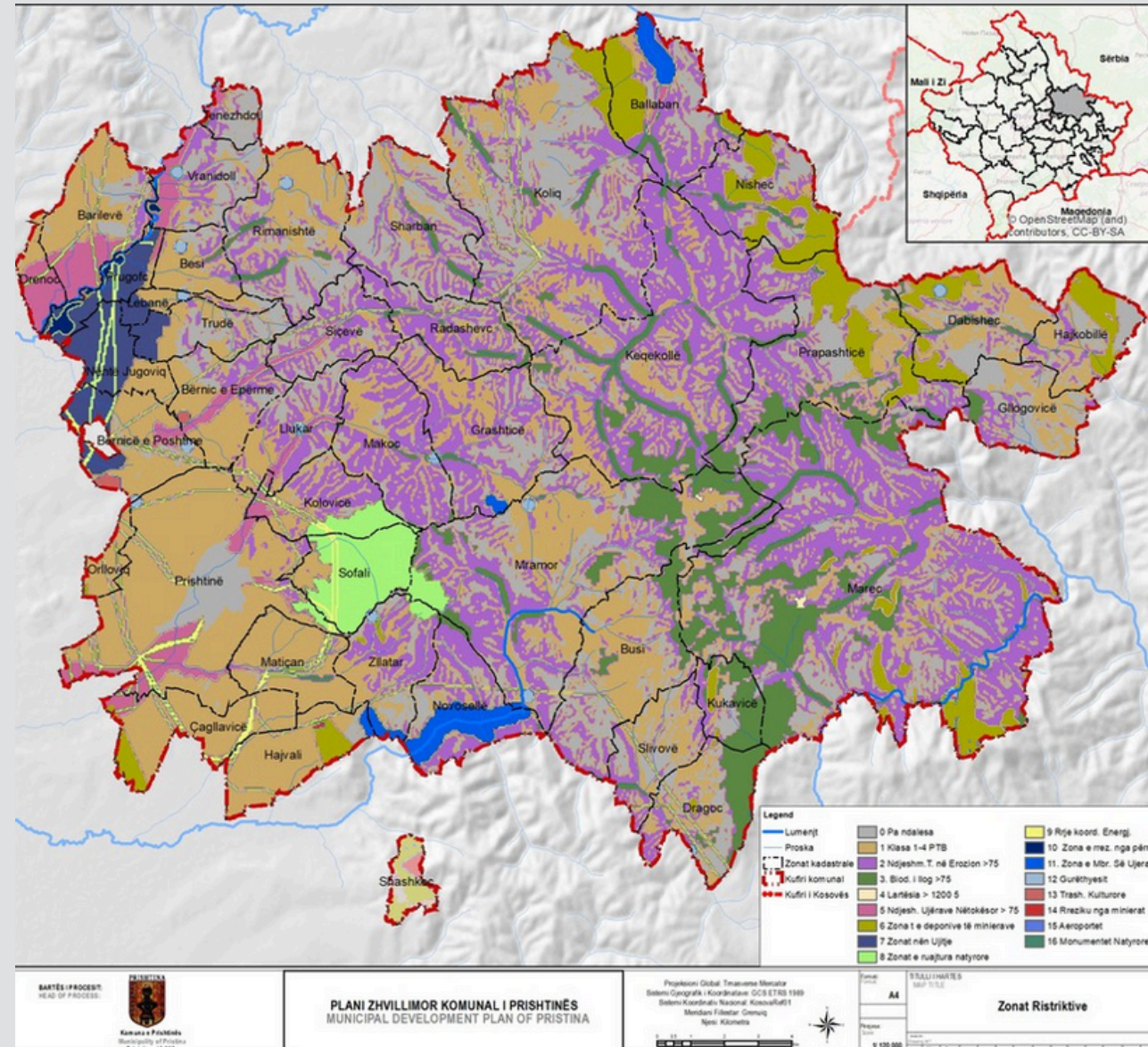
Multi-sectoral normative spatial planning documents, which establish detailed terms of constructions and additional conditions for regulating spatial developments for specific urban or rural zones as defined in the MDP and MZM

## **MUNICIPAL ZONING MAPS**

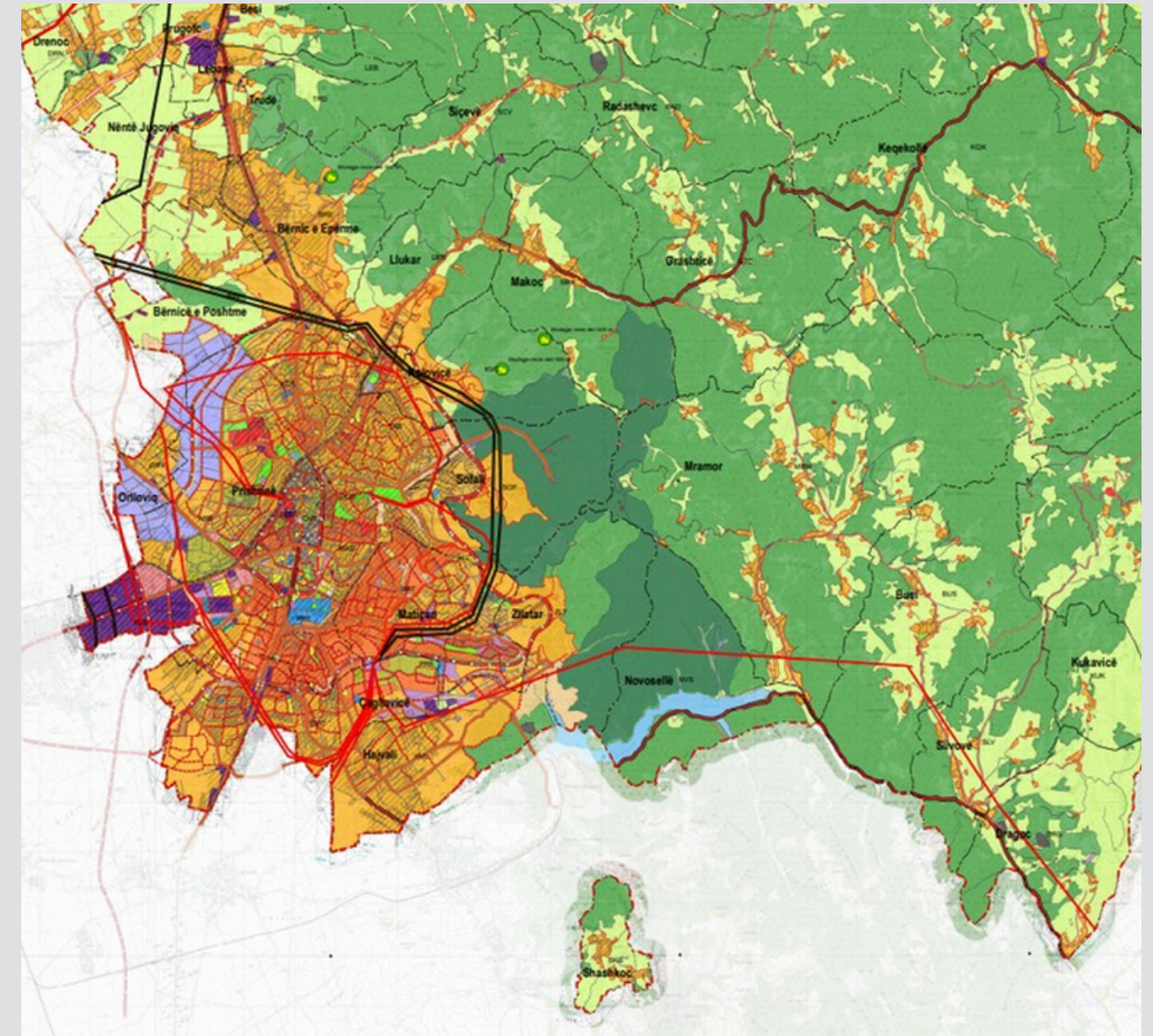
Multi-sectoral normative spatial planning documents, which establish long-term destination, spatial use, action measures, development conditions, and restrictions for the municipal territory, based on projections for public/private investments

### **Cross-functional services:**

- Investment Capacity Assessment - a diagnostic toolkit to enable sustainable development at the municipal level including financial, human, and spatial resources necessary to achieve the objectives and plans, effectiveness and time frame.
- Data Digitalization & Aerial Recording - Digitization services are mainly used for converting maps, sketches, schematic diagrams, or circuit diagrams into digital formats. Digitization services are also used in zonal maps, contour maps, cadastral maps, topographical maps and utility maps



Restrictive Zones -  
Municipal  
Development Plan of  
Prishtina, 2021-2029



Planned Land  
UseMap - Municipal  
Development Plan of  
Prishtina, 2021-2029

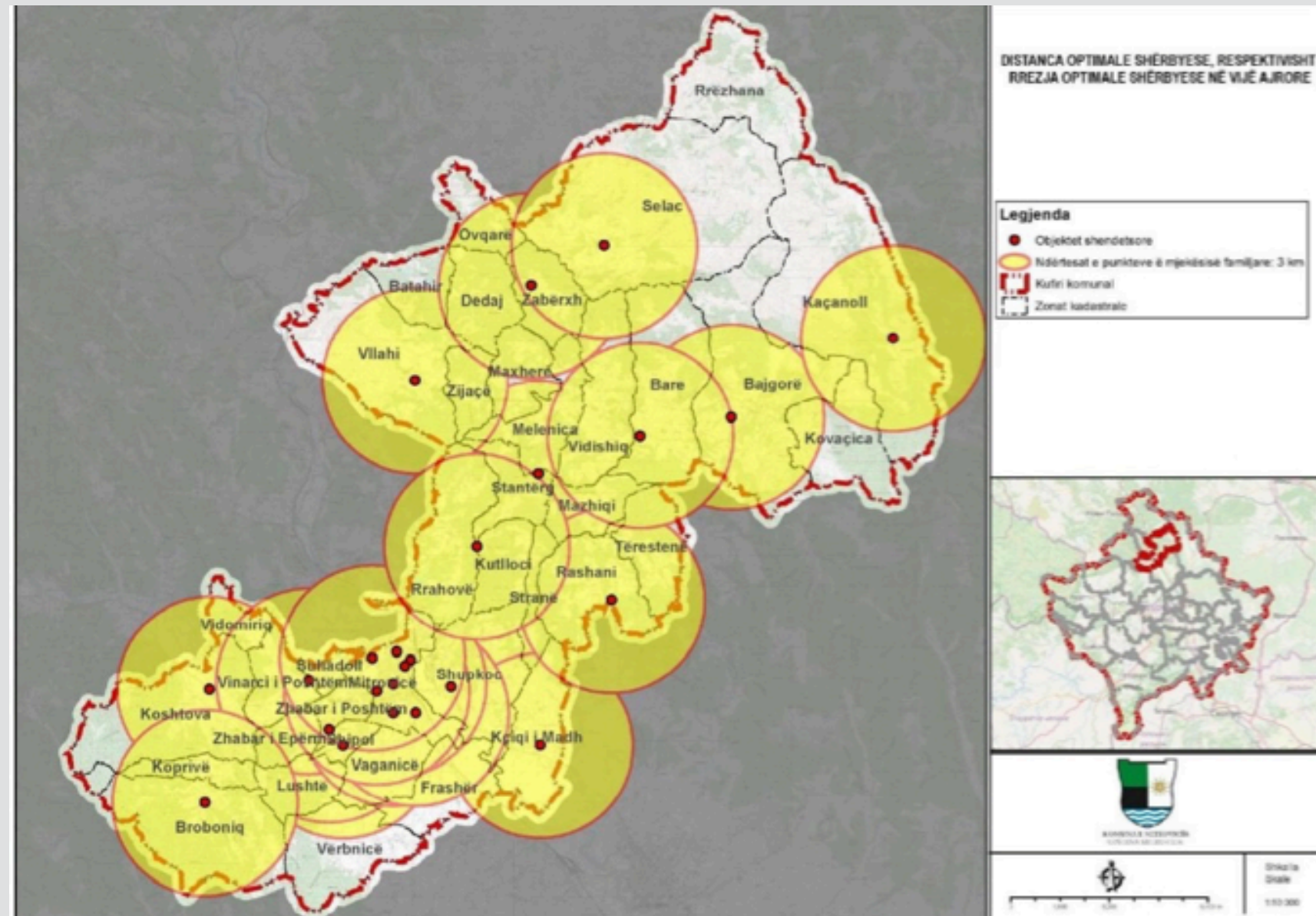


Municipal Development Plan consists of the:

- Textual Section and
- Cartographic Section

The **textual section** reflects the existing conditions and their assessment, upon which the future spatial development framework, strategic priorities, and implementation plan for future economic, environmental, public, and social infrastructure is based

The **cartographic section** consists of integrated maps according to thematic areas for the entire municipal territory prepared in the official spatial planning system in a GIS platform, which presents essential information for all sectoral development plans as a result of the Spatial Development Concept and Strategic Development Priorities.



**SUSTAINABLE  
TRANSPORT  
AND URBAN  
MOBILITY PLANS**

Our team of experts are initially involved in the preparation of a transportation system database to support the development of the technical analysis tool, as supplementary data that is needed to ensure the team understanding of the physical conditions, traffic volumes, and traffic flow patterns present

**Services include:**

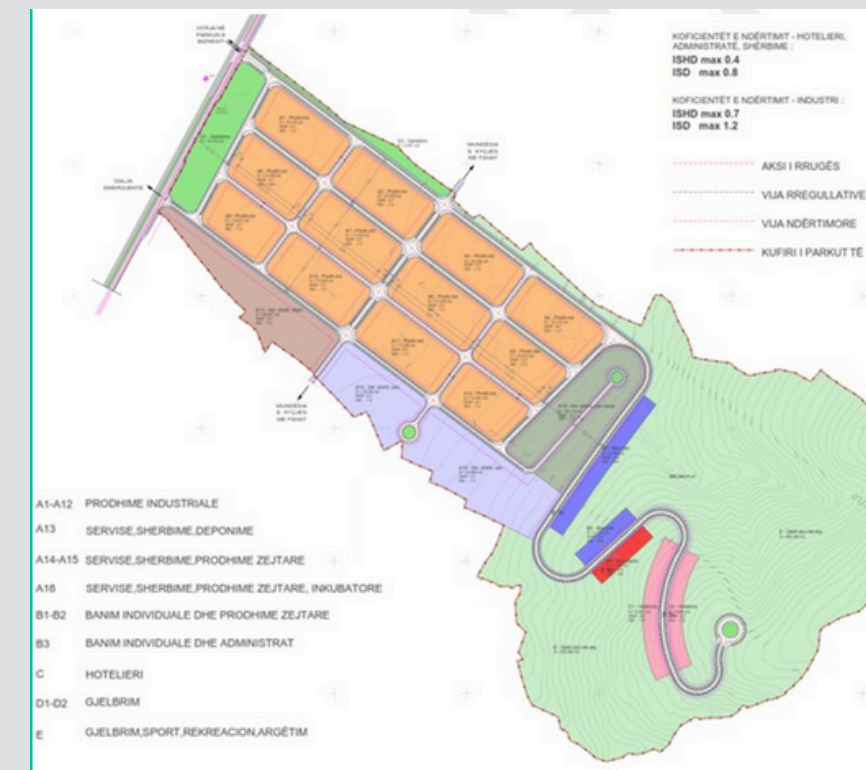
- **Review and evaluation** of the client's existing goals, objectives, policies, transportation plans, against future economic development and land use by identifying areas of conflict, positive and negative impacts
- **Comprehensive analysis** of the existing land use patterns and recommendations were compiled to improve and enhance inter-city mobility based on the existing transportation systems
- **Assessments** of the existing state of roads and protection buffers and the transportation infrastructure, expansion of local existing roads

**IN-DEPTH  
ANALYSIS &  
FEASIBILITY  
STUDIES**

Experience in conducting financial feasibility studies for Public Private Partnership (PPP) projects of any particular nature and utilizing data from our repository on economic development. Some of reference projects:

### Feasibility study of the economic zone for the Municipality of Prizren, Kosovo

The objective of this activity is to conduct a feasibility study of the economic zone and lead the process of licensing the zone through the preparation of the necessary documents required by the Ministry of Trade, Entrepreneurship, and Industry.



▲ Area's destination Mapping

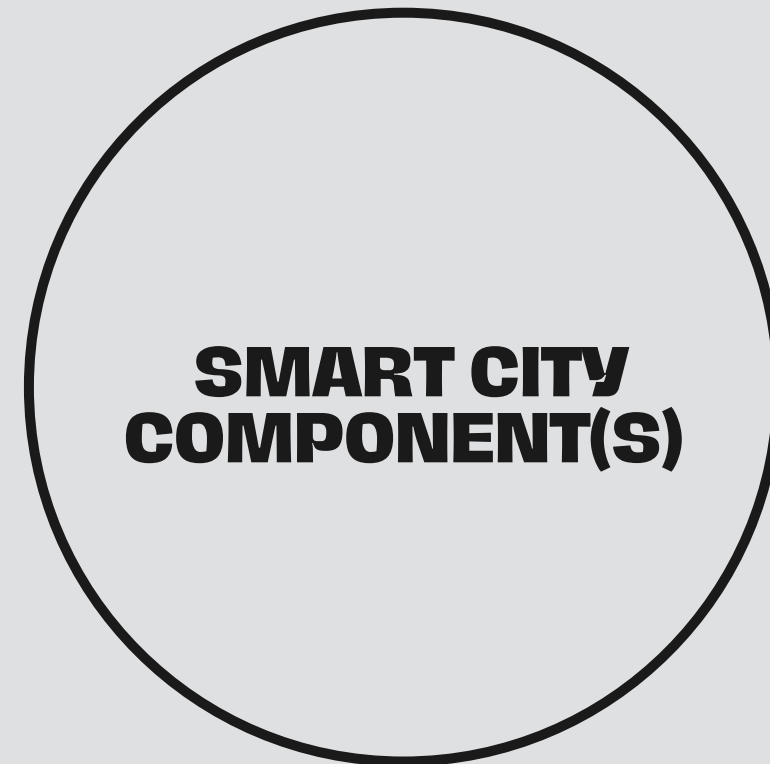
- Feasibility Study for the Economic Zone for the Municipality of Prizren, Kosovo

**ENERGY  
EFFICIENCY  
ANALYSIS AND  
ENGINEERING  
PLANS**

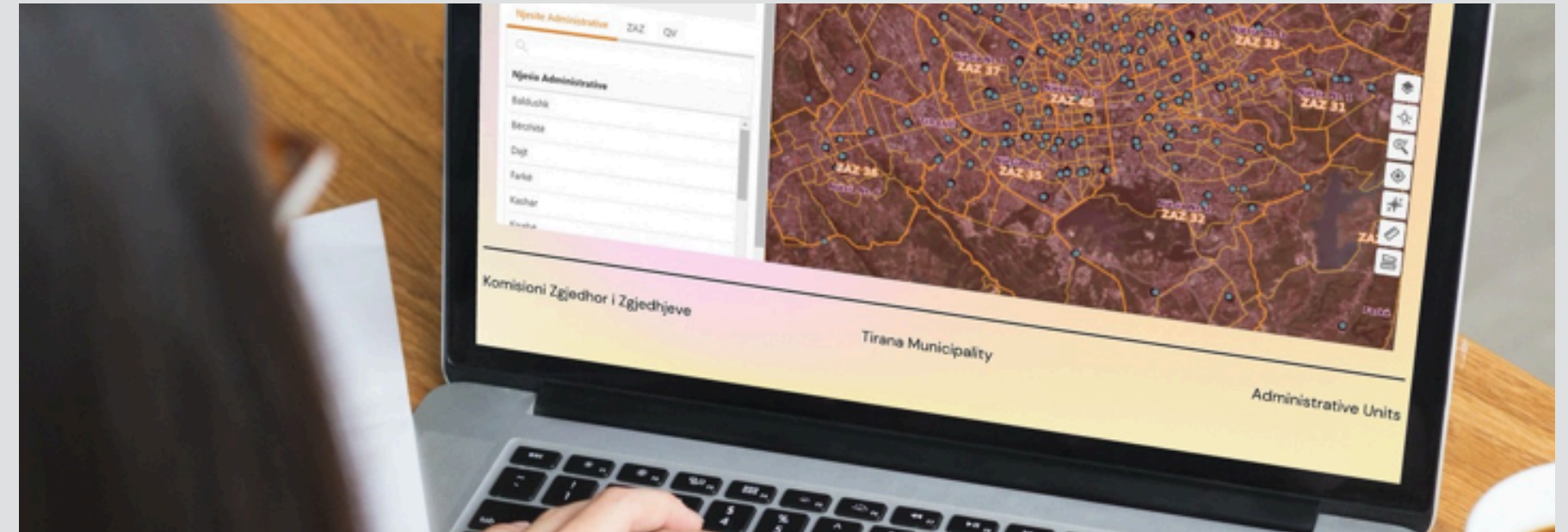
Design, engineering and execution of all types of work and process in the energy industry, as well as the delivery and installation of all necessary industrial equipment

**Services include:**

- **Energy Consulting and Analysis** - model your buildings energy footprint, to develop the solution that helps you obtain the optimal results. We will inspect your equipment, analyze your energy project, and make a practical suggestion that helps you generate success
- **Energy Engineering Plans** - assist you on turning key solutions for your gas and steam turbines, solar and wind power plants, providing technical and project management services in cooperation with SIPA specialists



# WebGIS Solutions



## END-TO-ENDWEBGIS SOLUTIONS

From interactive web maps to Geospatial Intelligence, we provide in-house WebGIS development team and subject expertise

## SPATIAL DATA INFRASTRUCTURE

Ample experience in designing and implementing end-to-end SDI solutions for customers

## HOTSPOT ANALYSIS & IMAGE PROCESSING

Through GIS Data image processing, we identify hot spot locations and networks can be optimized using data intelligence

# Smart City Components



## **SMART STREET LIGHTING**

Combines energy-efficient and LED luminaires with sensors and wireless connectivity, enabling to remotely manage, monitor, and control lighting on roads, streets, and parks, via a single dashboard

## **SMART WASTE MANAGEMENT**

Smart wastemanagement solution that provide real-time insights on waste fill levels, collection routes, bin movements and locations

## **SMART PARKING**

Design and developa parking guidance system which accurately senses the occupancy status of parking space(s) by fully integrating LPR Camera and other complementary sensors

## **SMART WATER MANAGEMENT**

Communication dashboard allows you to remotely manage your hydro system. As such you have access to more data to make informed decisions and preplan your monthly bills

# Quality Assurance



## **FUNCTIONAL TESTING**

This involves testing the functionality of a product or system to ensure that it works as intended. This may include testing individual components or subsystems, as well as the overall system

## **PERFORMANCE TESTING**

This involves testing the performance of a product or system under various conditions to ensure that it can handle the expected workload and meet performance requirements

## **USABILITY TESTING**

This involves testing the usability of a product or system to ensure that it is easy to use and understand. This may include testing for user-friendliness, user satisfaction, and ease of use

## **QUALITY ASSURANCE**

Consulting involves helping clients develop and implement quality assurance processes and procedures to ensure that their products or systems meet industry standards and regulations

# Tech frameworks tools for QA

Selenium for automated testing  
JMeter for performance testing  
Appium for mobile testing  
defect tracking tools include JIRA, Team Foundation Server

Some examples of load testing tools include LoadRunner, JMeter

Quality management software such as JIRA or Team Foundation Server may be used to track and manage defects, issues, and other quality-related items



Some of the testing tools that enable us to perform the abovementioned services in both quality assurance testing services and consulting ones



# IT Customer Support & Services

## HELP DESK SUPPORT

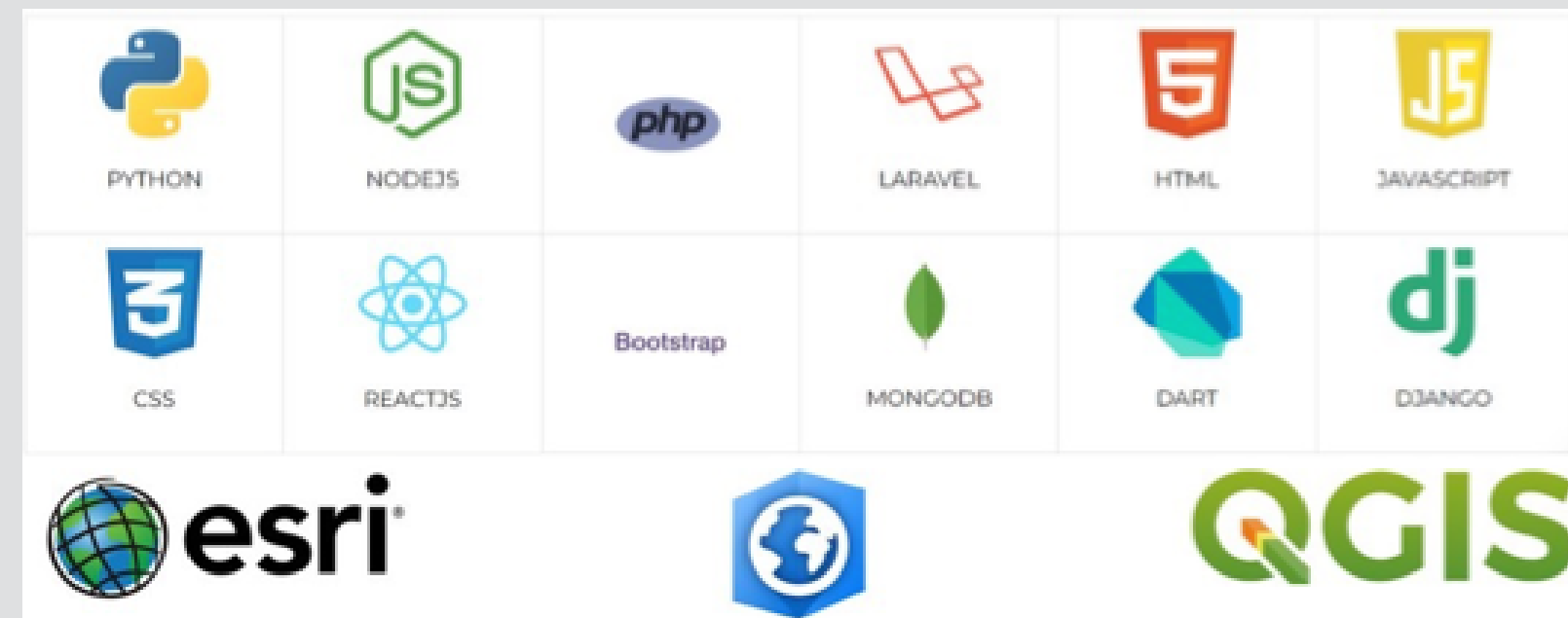
Involves providing technical support to users via phone, email, or chat. This could include answering questions, troubleshooting issues, and providing guidance on how to use software and hardware

## DATA ENTRY

Involves in putting data into a computer system, including transcribing data, verifying the accuracy of entered data, and maintaining databases

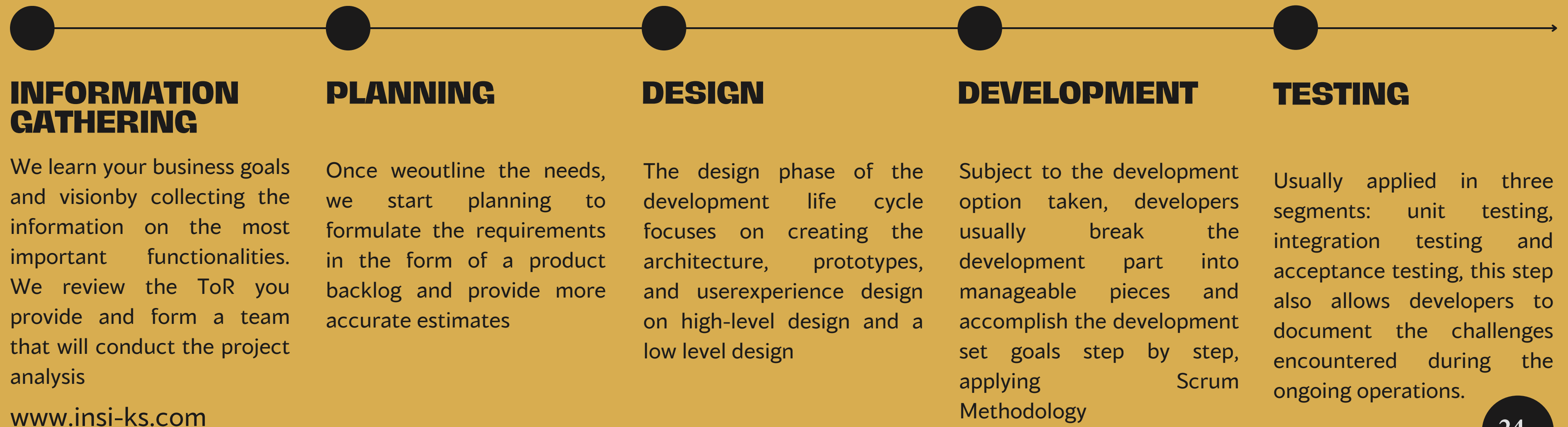
# Tech frameworks tools for QA

Overall, the tech stack for a software, web, and web GIS development project will vary depending on the specific needs of each project and the preferences of the clients, but here are some of the tools our team is specialized on;



## Tech Stack

# How we deliver



# Working Modalities



## **PROJECT-BASED**

The company takes care of the development and management of the entire project, be that a completed product or a specific part

## **DEVELOPMENT ONLY**

The company takes care of all development tasks while the company requesting such service is in charge of the management of the project

## **"BODY LEASING"**

The company lends the in-house specialists to companies, be that for software development or data science-related projects, charging on hourly fee



# Let's Connect With Us!

We're just one click away to help you accelerate and transform your business from great to incredible



+383 49 744 007; +383 44 999 007



info@insi-ks.com, baftijari@gmail.com



www.insi-ks.tech; www.insi-ks.com